

Conext System Control Panel

Monitor and configure Conext inverter charger systems and Xanbus enabled accessories.



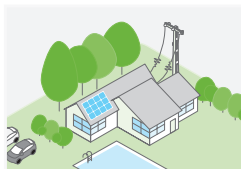
Product at a glance

The Conext™ System Control Panel (SCP) eliminates the need for separate control panels for each device and gives a single point of control to set up and monitor the entire Conext inverter/charger system, including Conext MPPT Solar Charge Controllers. Featuring a graphical backlit liquid crystal display (LCD), the SCP selectively displays configuration, status, and diagnostic information for all devices connected to the Xanbus™ network.

Product applications



Backup power



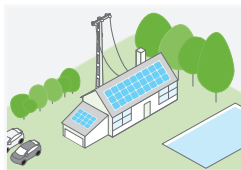
Residential grid-tie solar with backup power



Off-grid solar



Community electrification



Self-consumption

Why choose Conext System Control Panel?

Higher return on investment

- Get the most out of Conext inverter/charger systems and Conext MPPT Solar Charge Controllers
- Clearly understand status and settings
- Optimize system setup and device performance

Designed for reliability

- Extensive quality and reliability testing

Flexible

- Monitor and configure Conext™ XW Pro, XW+, SW, MPPT 60 150, MPPT 80 600, AGS, Battery Monitor
- Multiple SCPs can be used on the same Xanbus network
- Compatible with Conext™ Gateway and ComBox

Easy to service

- Access and troubleshoot Xanbus-enabled devices on the network from one location
- Remove and replace without the loss of device settings

Easy to install

- Surface mount or panel mount on wall
- RJ45 connections for Xanbus network cables

True bankability

- Warranty from a trusted partner with 180 years of experience
- World leader in industrial power drives, UPS and electrical distribution
- Strong service infrastructure worldwide to support your global needs

Device short name	Conext™ System Control Panel
Electrical specifications	
Nominal voltage	15 Vdc
Min. operating network voltage	14.25 Vdc
Max. operating network voltage	15.75 Vdc
Max. operating current at nominal voltage	200 mA
General specifications	
Dimensions (H x W x D)	15.2 x 10.3 x 4.0 cm (5.9 x 2.6 x 1.6 in)
Weight	200.0 g (0.4 lb)
Shipping weight	800.0 g (1.8 lb)
Mounting options	Panel-mount, wall-mount
IP rating/location	IP20, indoor only
Operating temperature range	-20 to 50 °C (-4 to 122 °F)
Part number	865-1050-01
Features	
Network	Protocol: Xanbus/Connectors: RJ45
Internal clock	Provides network time
Memory	Nonvolatile
Alarm	Audible
Display	Backlit LCD; Green/red LED
Front-panel interface	Four menu buttons, one standby button
Warranty	2 years
Regulatory approvals	
Safety	CSA 107.1, UL 458 4 th Ed
EMC	CE directive 2004/108/EC, IEC/EN61000-6-3, IEC/EN61000-6-1, FCC Part 15B Class B, Industry Canada ICES-00. Class B, C-Tick
Included parts	
	One remote head
	One network terminal
	One CAT5 cable (2.1 m)
	One mounting plate
	One mounting bracket
	Four #8 screws
	Two #6 screws
Compatible products part numbers	
Conext XW Pro UL (120/240 V)	XW Pro 6848 NA: 865-6848-21
Conext XW+ IEC (230 V)	XW 7048 E: 865-7048-61 / XW 8548 E: 865-8548-61
Conext XW+ UL (120/240 V)	XW 5548 NA: 865-5548-01 / XW 6848 NA: 865-6848-01
Conext SW IEC (230 V)	SW 2524: 865-2524-61 / SW 4024: 865-4024-61 / SW 4048: 865-4048-61
Conext SW UL (120 V)	SW 2524: 865-2524 / SW 4024: 865-4024 / SW 4048: 865-4048
Conext MPPT 80 600	865-1032
Conext MPPT 60 150	865-1030-1
Conext Gateway	865-0329
Conext ComBox	865-1058
Conext Automatic Generator Start	865-1060
Conext Battery Monitor	865-1080-01
Conext Configuration Tool	865-1155-01
Conext Quick Fit for North America	XW Pro H: 865-6848-21HPS / XW Pro L: 865-6848-21LPS / XW Pro: 865-6848-21QF / XW+ H: 865-6848-01HPS / XW+ L: 865-6848-01LPS / SW 4048: 865-4048LPS / SW 4024: 865-4024LPS

Specifications are subject to change without notice.